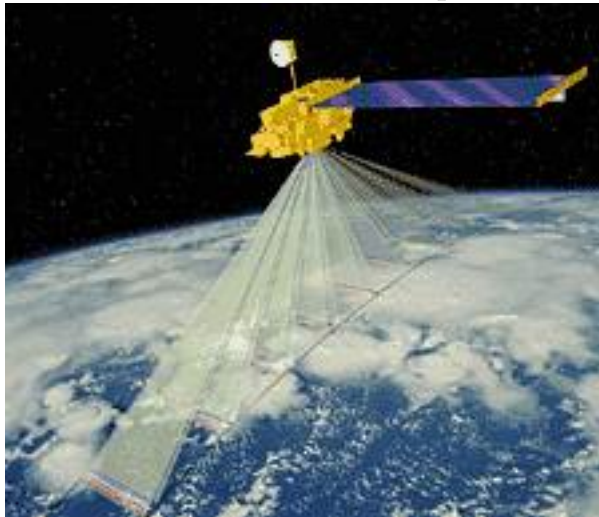


Multi-angle Imaging SpectroRadiometer (MISR) Overview

- | | |
|--|---|
| <ul style="list-style-type: none"> • Launched December 18, 1999 on Terra spacecraft in a sun-synchronous polar orbit • Views the sunlit Earth simultaneously at nine widely-spaced angles • Provides calibrated images in four spectral bands at each of the nine angles • Spatial sampling of 275 and 1100 meters provided globally | <ul style="list-style-type: none"> • Orbits the Earth about 15 times each day • 233 distinct orbits (called paths) are repeated every 16 days • Near global coverage is obtained in 9 days at the equator, 2 at the poles • MISR data products are available from February 24, 2000 in HDF-EOS format |
|--|---|

Observation Concept



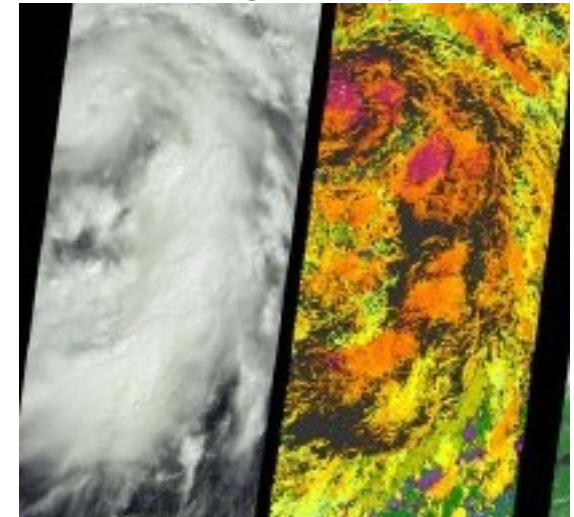
[Concept Description](#)

Data Products through Imagery



[Data Products through Imagery \(PDF\)](#)

Image Gallery



[Image Gallery](#)