

LASER ALTIMETRY APPLICATIONS FOR A CHANGING WORLD

Explore ICESat -2 Data
during our multi -part series



Our motivation



Today's webinar is the FIFTH in a multi-part data training series during which we aim to provide you with the tools to navigate ICESat-2 data. The motivations for the webinars include :



Highlight the capabilities of ICESat-2 and its data products .



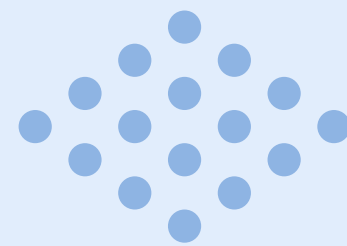
Capacity building : focus on processing tools and workflows for novel science applications .



Grow the community : we want more folks to understand and discover new ways to use ICESat-2 data.



What to Expect in Future Webinars

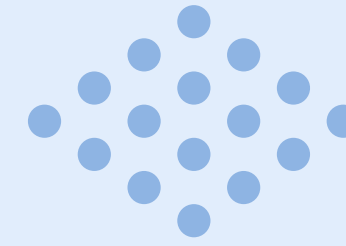


Data product overview

Provide additional detail for a data product, including uncertainties and caveats.

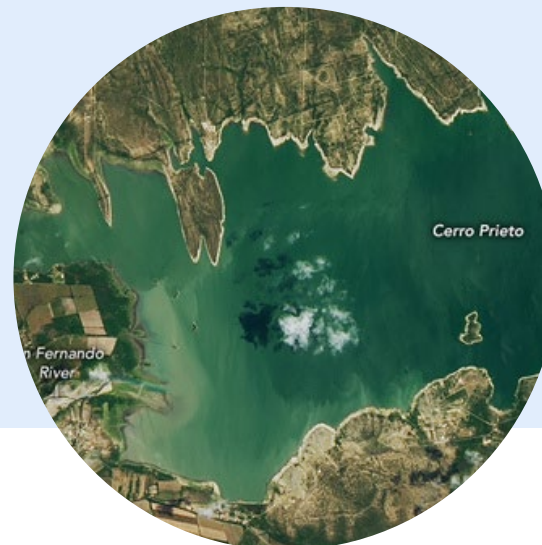
Live tutorial

A subject matter expert will present their method using a tutorial -style demonstration.



Application use case

Provide a brief overview about how the data product can be used for real -word applications and research.

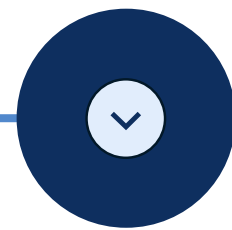


Thematic applications

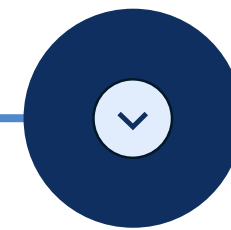
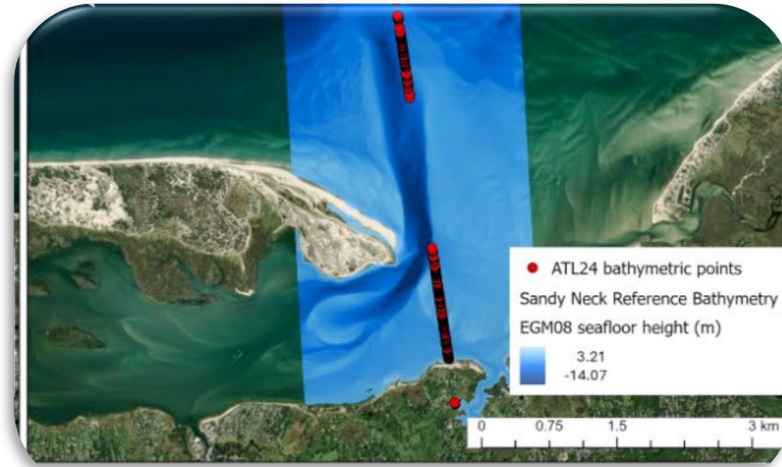
ICESat-2 can provide information about various biomes on the Earth beyond ice. In this series of webinars, we propose to cover a diverse group of thematic applications. Note: topics are subject to change based on speaker availability. Future webinars will be announced two-weeks ahead of time.



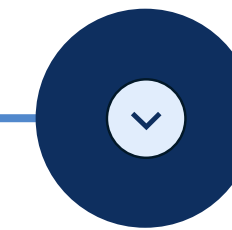
Sea Ice



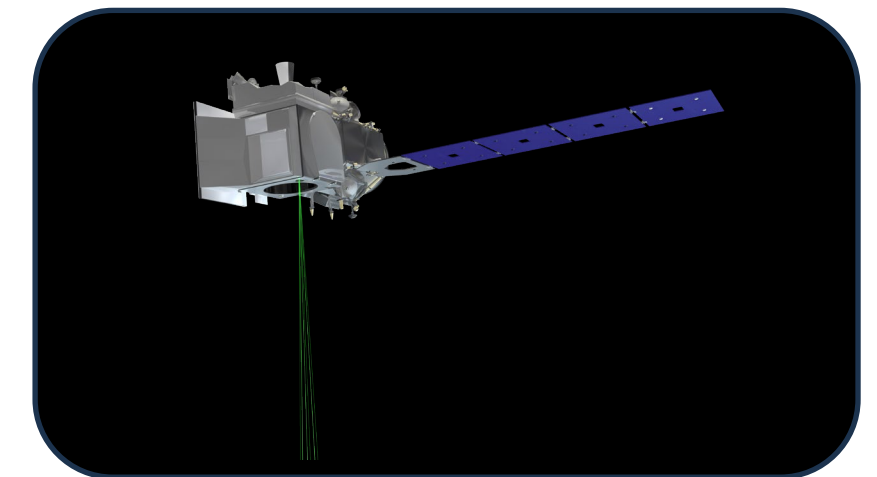
Coastal Bathymetry












Forest vegetation



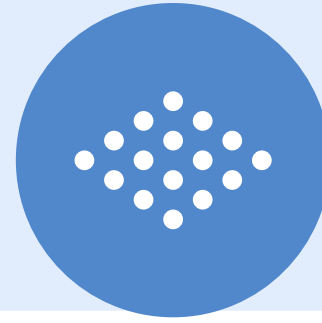
Introduction



Resources:

-  icesat-2.gsfc.nasa.gov
-  nsidc.org/data/icesat-2
-  cryointhecloud.com
-  icesat-2.github.io/awesome-icesat2/
-  slideruleearth.io
-  icepyx.readthedocs.io/en/latest/index.html
-  openaltrimetry.earthdatacloud.nasa.gov/data/
-  https://sealevel.nasa.gov/data_tools/17/
-  youtube.com/c/NASAEarthdata





THANK YOU!



<https://lp.constantcontactpages.com/sl/2S3PYmO>



icesat -2-applications -JOIN@lists.nasa.gov