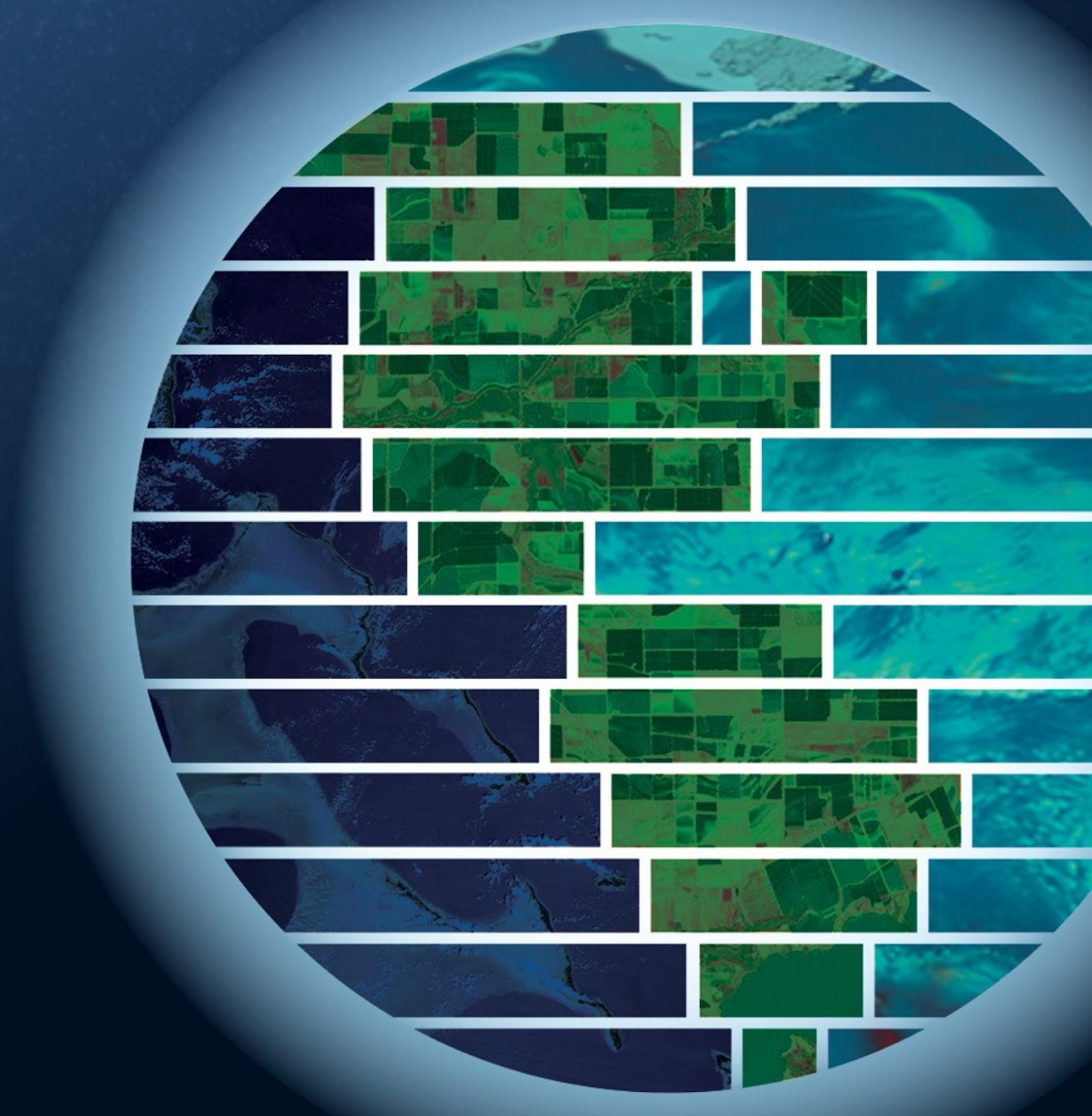


National Aeronautics and
Space Administration

EARTHDATA

Introducing the ASF Displacement Portal

Forrest Williams
Alaska Satellite Facility



Agenda

- Overview of the OPERA-DISP products
- Caveats for the products
- **Demo: ASF Displacement Portal**
- Q&A



National Aeronautics and
Space Administration



OPERA-DISP

- Measures surface displacement of the Earth at cm scales
- Useful for studying displacement from many sources
 - Earthquake, groundwater withdrawal, landslide, etc.
- Created by the JPL OPERA team
- Hosted at the Alaska Satellite Facility
- PS+DS Time Series InSAR data



National Aeronautics and
Space Administration



InSAR

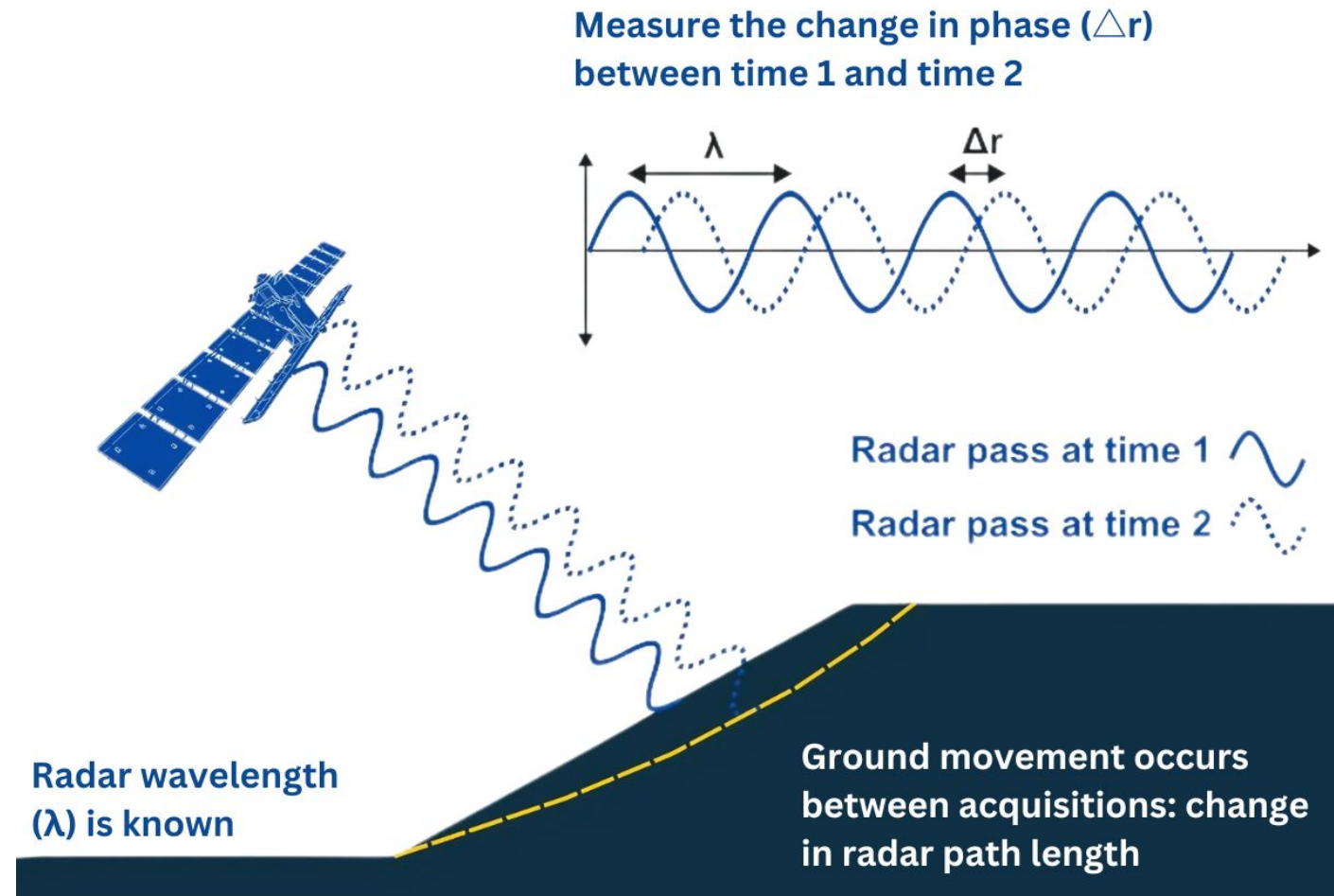


Image Credit: SatSense

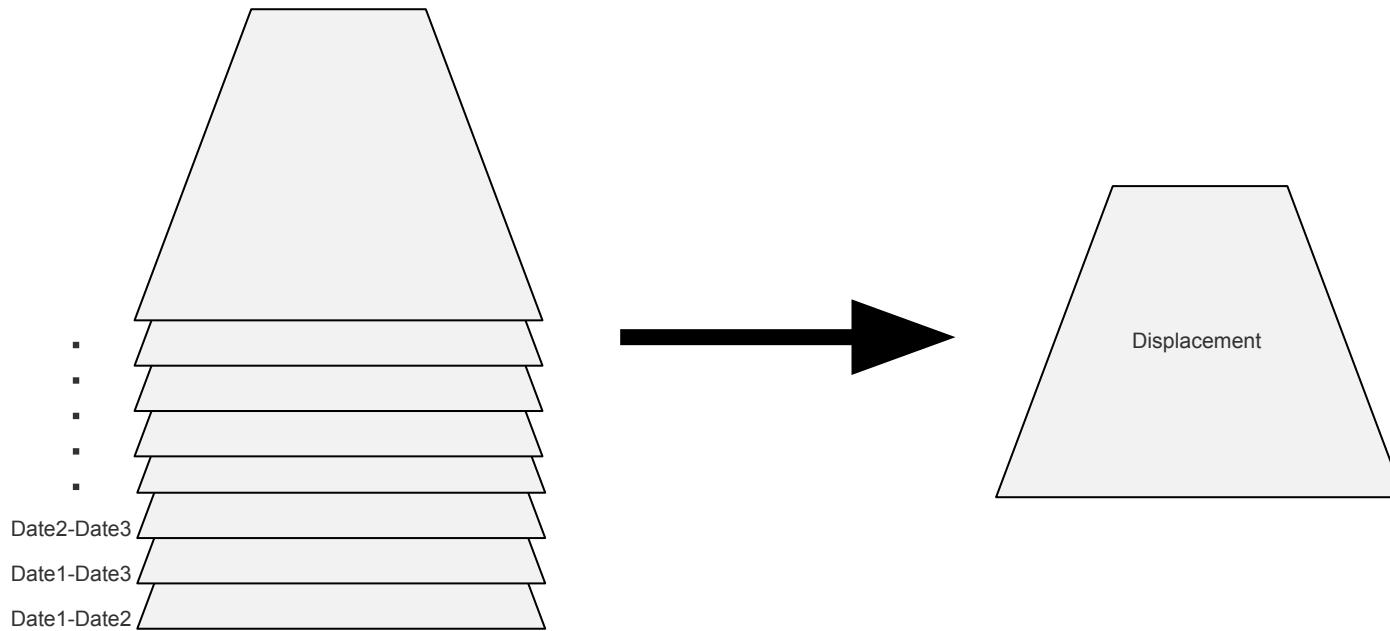


National Aeronautics and
Space Administration



Time Series InSAR

Combine many InSAR images to reconstruct displacement over time



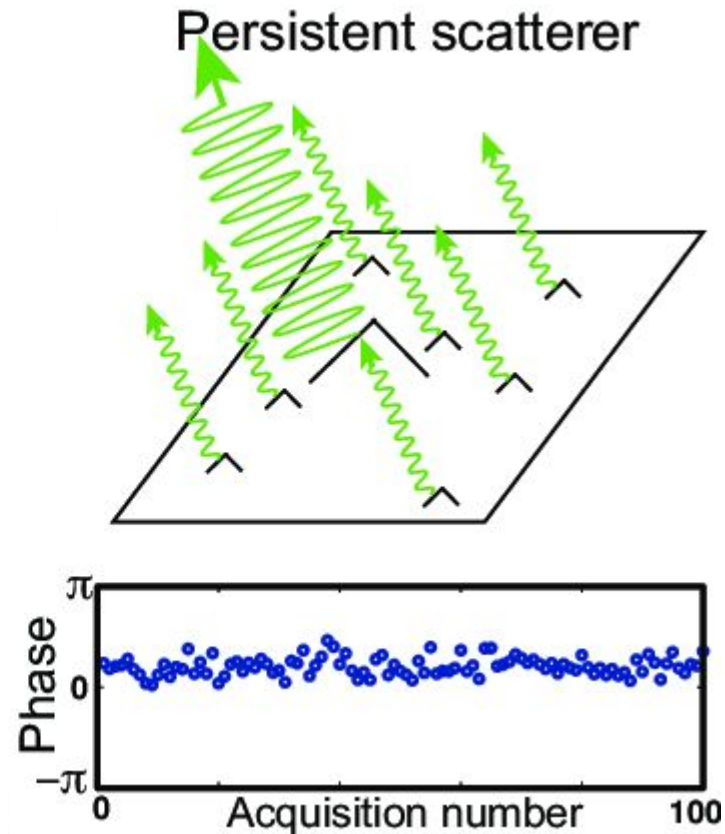
National Aeronautics and
Space Administration



PS Time Series InSAR

PS: Persistent scatterer

- Treat highly-coherent (stable) features as single points
- High resolution
- Low spatial coverage



National Aeronautics and
Space Administration

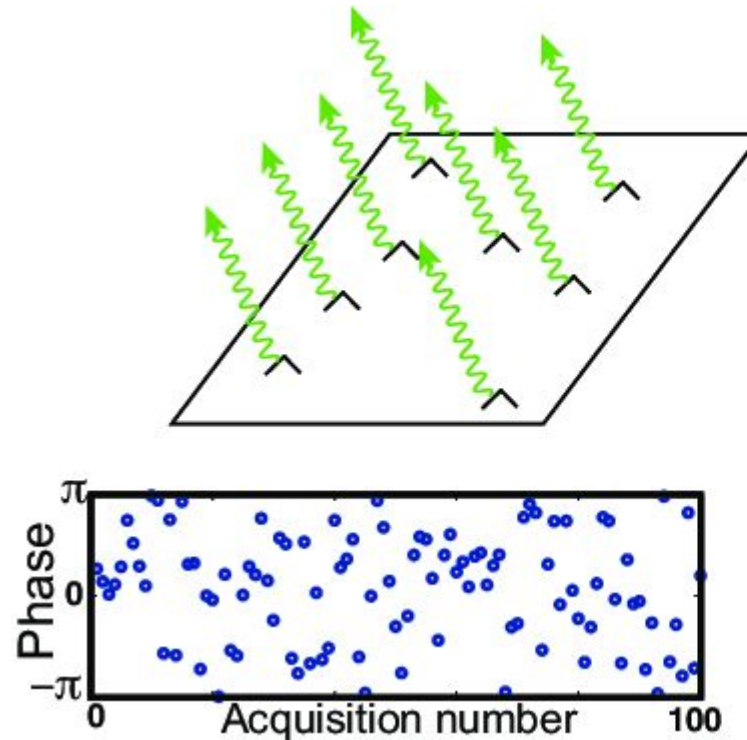


DS Time Series InSAR

DS: Distributed Scatters

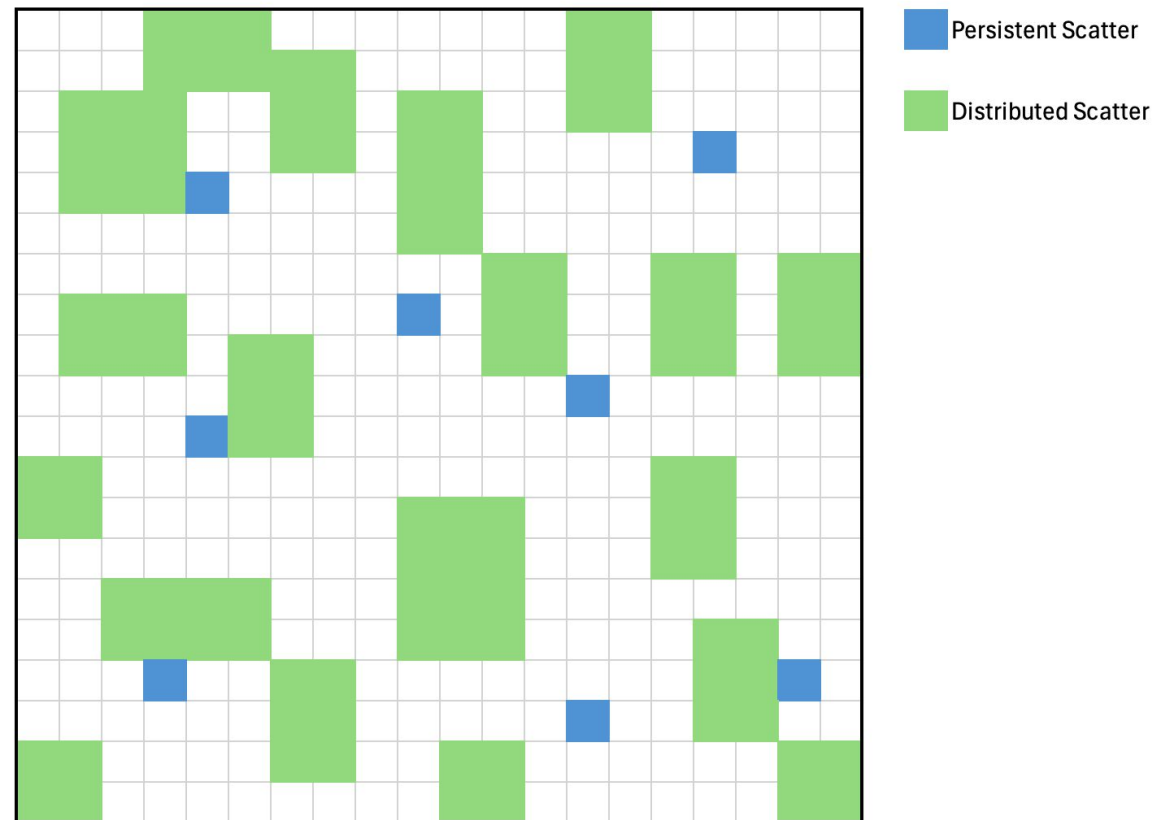
- Treat less-coherent but close features as larger features via averaging
- Low resolution

Distributed scatterer



PS+DS Time Series InSAR

PS+DS: Combine both scatterer types into a single analysis



National Aeronautics and
Space Administration



OPERA-DISP Specs

- **Spatial Coverage:** Most of North America and U.S. outlying territories
 - Creation is in progress
 - Southwestern U.S. is most complete
- **Temporal Coverage:** 2016-2024
 - Forward processing towards end of year
- **Pixel Spacing:** 30 m



National Aeronautics and
Space Administration



OPERA-DISP File Format

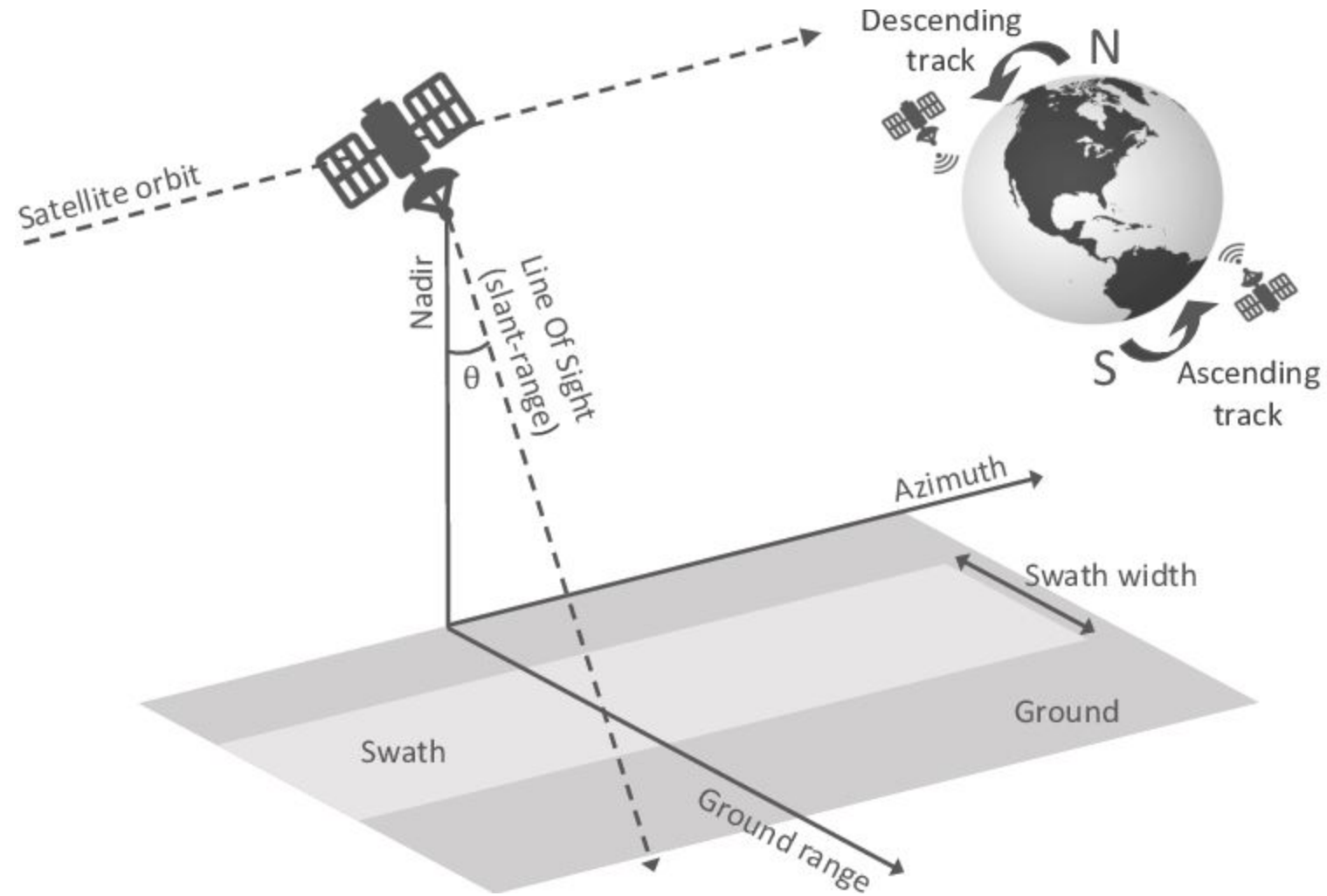
- Cloud-optimized NetCDF files
- Important layers
 - Displacement
 - Filtered, local displacement
 - Coherence
 - Reliability mask



National Aeronautics and
Space Administration



Displacement is along the satellite's line-of-sight

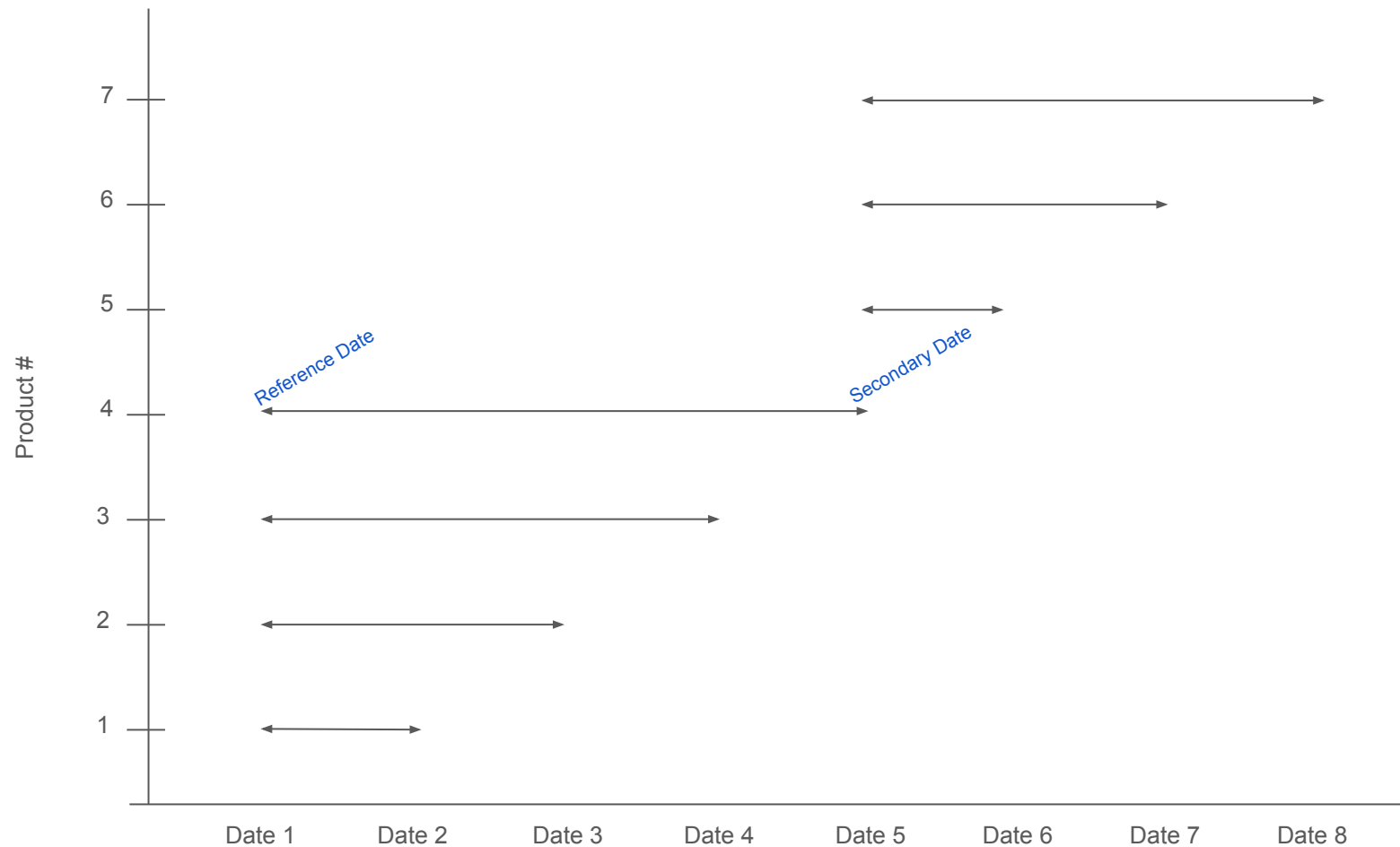


National Aeronautics and
Space Administration

Image Credit: TRE Altimera



Displacement is between a specific reference and secondary date

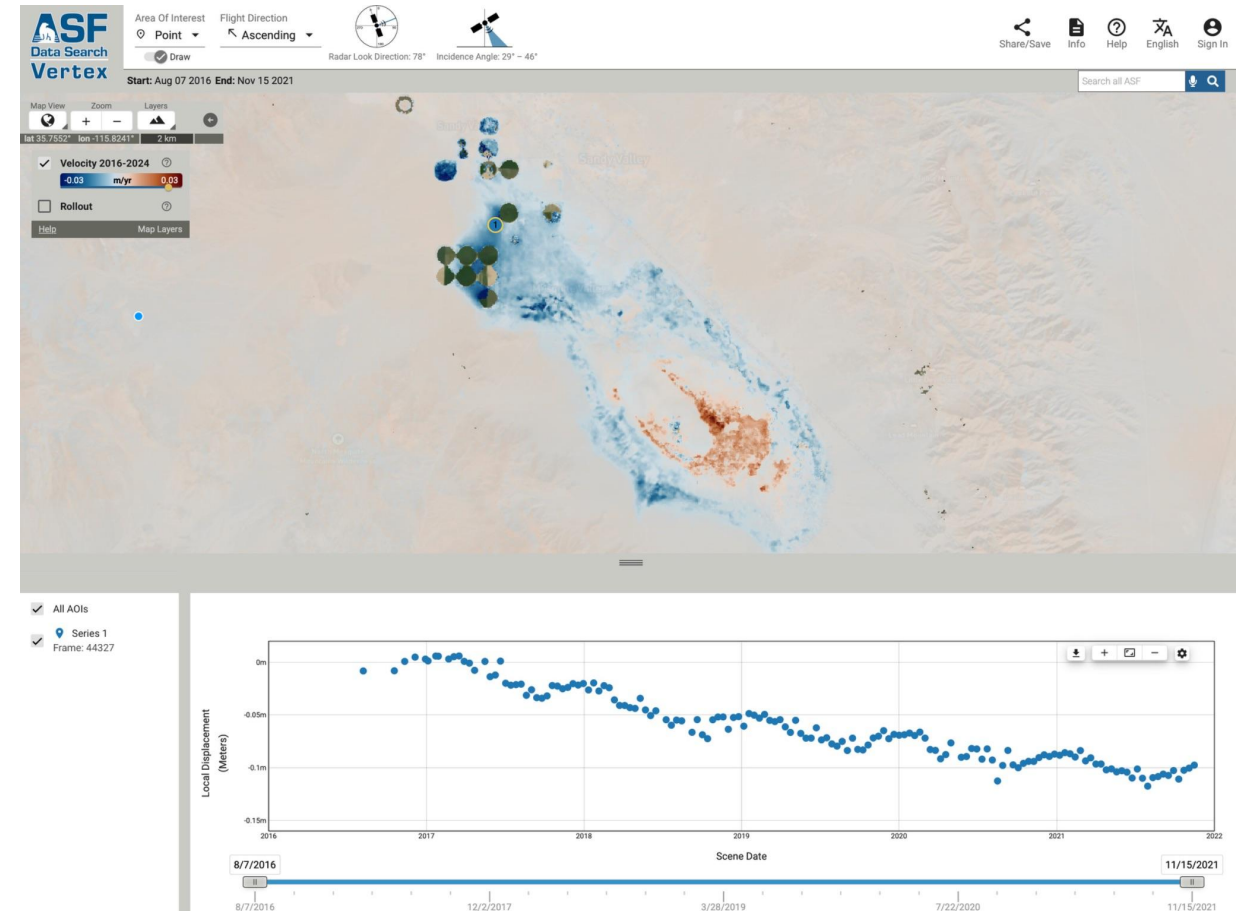


National Aeronautics and
Space Administration



ASF Displacement Portal

- Open-source web interface for OPERA-DISP dataset
- Offers intuitive spatial browsing and direct exploration of the data
- Uses local displacement



National Aeronautics and
Space Administration



DEMO!



National Aeronautics and
Space Administration



Resources

- <https://displacement.asf.alaska.edu>
- <https://www.jpl.nasa.gov/go/opera/products/disp-product-suite/>
- <https://search.asf.alaska.edu>



National Aeronautics and
Space Administration



A satellite image of the North Atlantic Ocean, showing parts of North America, Europe, and Africa. The image is used as a background for the slide.

Try out the portal today!

CONTACT

uso@asf.alaska.edu

WEBSITE

displacement.asf.alaska.edu