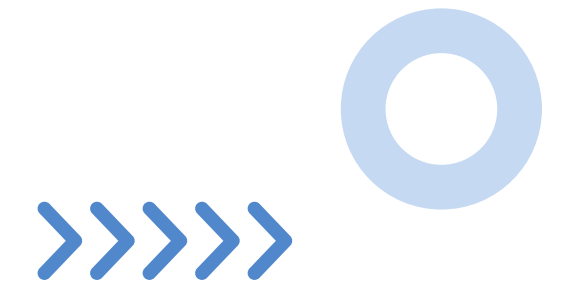


LASER ALTIMETRY APPLICATIONS FOR A CHANGING WORLD

Explore ICESat -2 Data
during our multi -part series



Our motivation



Today's webinar is the third in a multi-part data training series during which we aim to provide you with the tools to navigate ICESat-2 data. We will host additional events in 2025, generally on a seasonal basis. The motivations for the webinars include :



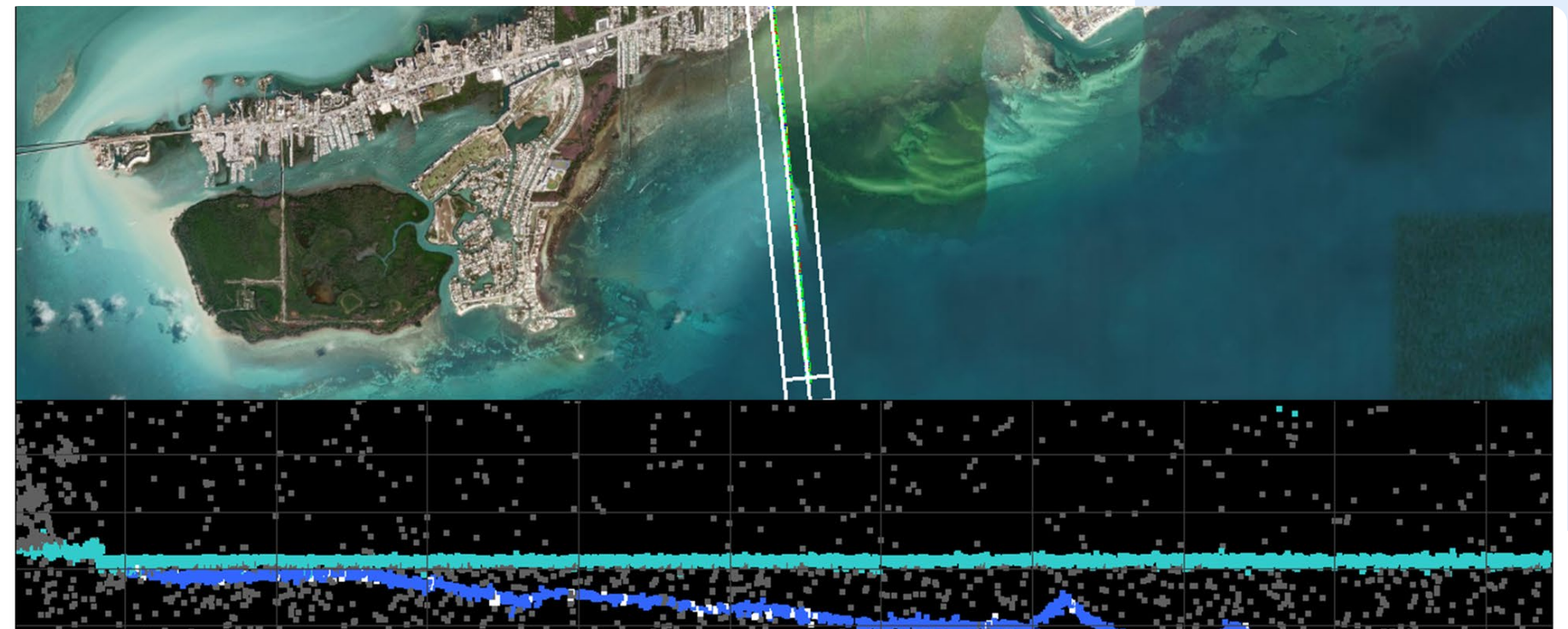
Highlight the capabilities of ICESat-2 and its data products .



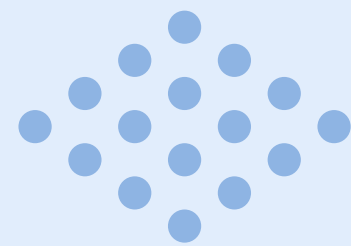
Capacity building : focus on processing tools and workflows for novel science applications .



Grow the community : we want more folks to understand and discover new ways to use ICESat-2 data .



What to Expect in Future Webinars

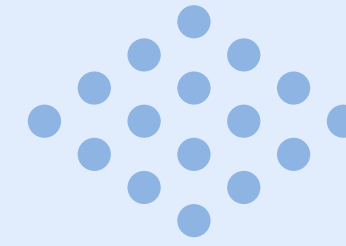


Data product overview

Provide additional detail for a data product, including uncertainties and caveats.

Live demonstration

A subject matter expert will present their method using a tutorial -style demonstration.



Application use case

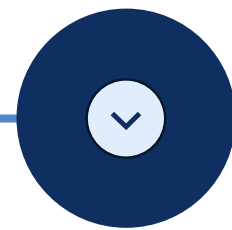
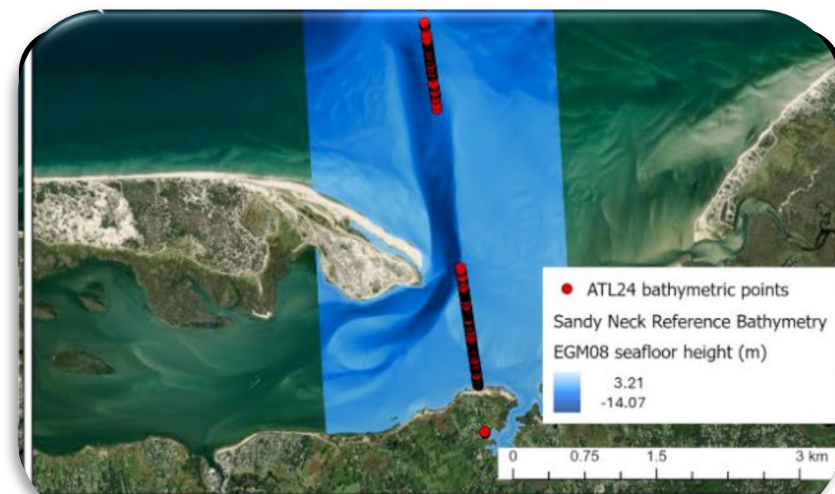
Provide a brief overview about how the data product can be used for real -word applications and research.

Thematic applications

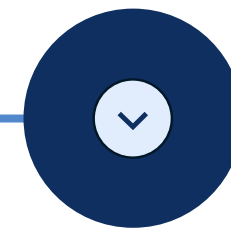
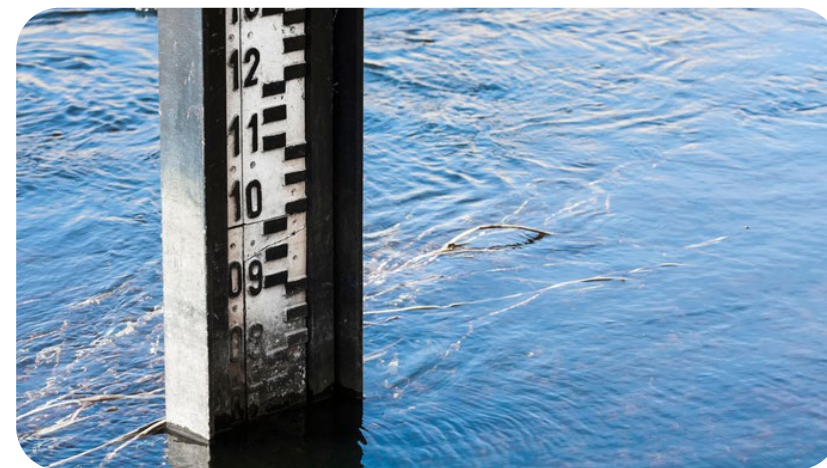
ICESat-2 can provide information about various biomes on the Earth beyond ice. In this series of webinars, we cover a diverse group of thematic applications. Note: topics are subject to change based on speaker availability. Future webinars will be announced two-weeks in advance.



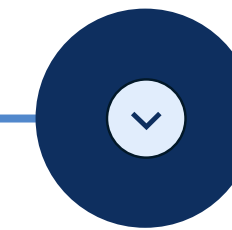
Bathymetry (Today!)



Sea Level Change



Sea ice and melt ponds











Hydrology



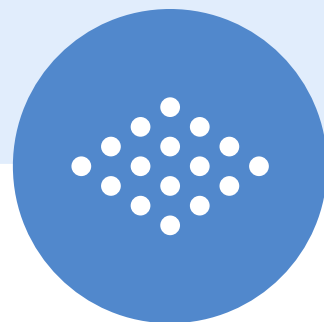


aimee.neeley@nasa.gov

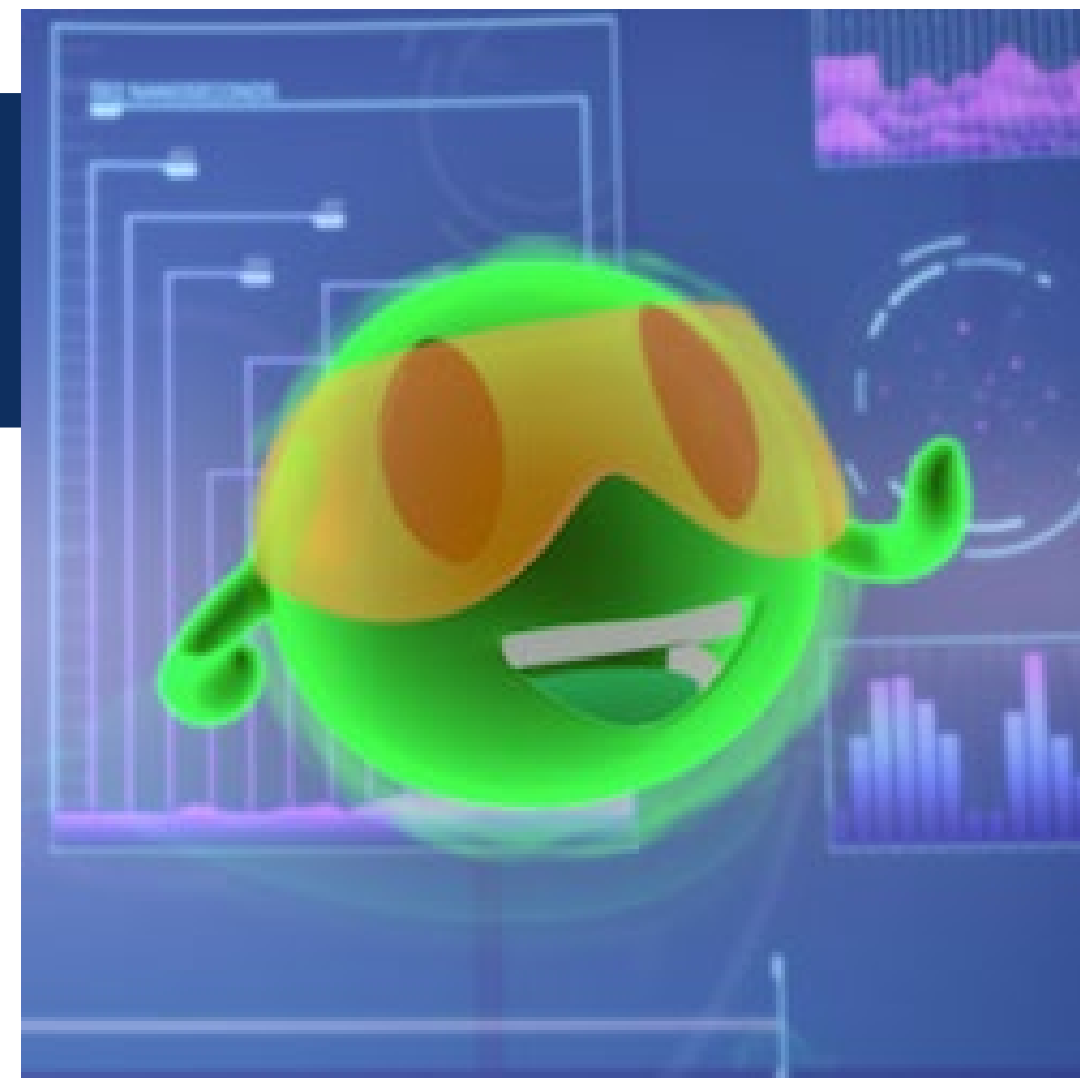
Resources:

-  **Website:** icesat-2.gsfc.nasa.gov
-  **NASA DAAC:** nsidc.org/data/icesat-2
-  **ATL24 dataset:** nsidc.org/data/atl24/versions/1
-  **SlideRule:** slideruleearth.io
-  **Earthdata:** www.earthdata.nasa.gov
-  **Icepyx:** icepyx.readthedocs.io/en/latest/index.html
-  **Open Altimetry:**
openaltimetry.earthdatacloud.nasa.gov/data/
-  **CryoCloud:** cryointhecloud.com





THANK YOU!



icesat-2-applications -JOIN@lists.nasa.gov



aimee.neeley@nasa.gov