

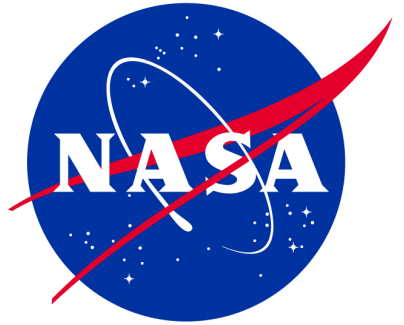
LASER ALTIMETRY APPLICATIONS FOR A CHANGING WORLD

Explore ICESat -2 Data
during our multi -part series



Our motivation

National Aeronautics and
Space Administration



Today's webinar is the first in a multi-part data training series during which we aim to provide you with the tools to navigate ICESat-2 data. We will host additional events in 2025, generally on a seasonal basis: e.g., Winter, Spring, Summer and Fall. The motivations for the webinars include :



Showcase the capabilities of ICESat-2 and its data products .



Capacity building : focus on processing tools and workflows for novel science applications .

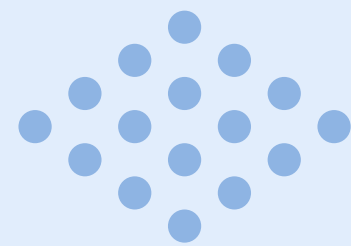
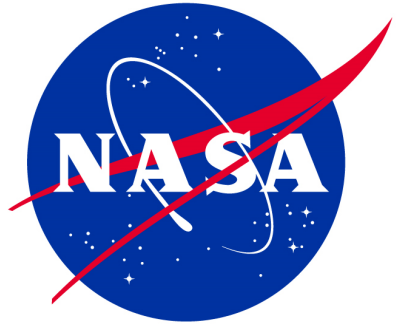


Grow the community : we want more folks to understand and discover new ways to use ICESat-2 data .



What to Expect in Future Webinars

National Aeronautics and
Space Administration

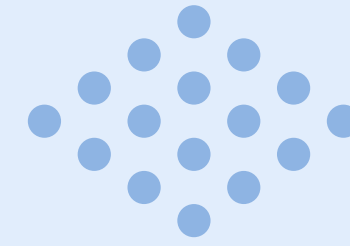


Data product overview

Provide additional detail for a data product, including uncertainties and caveats.

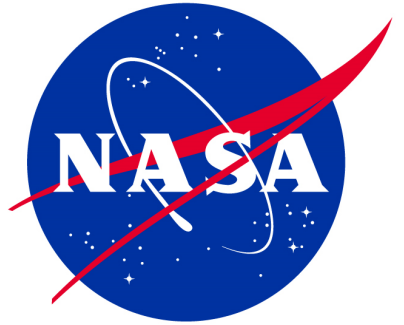
Live tutorial

A subject matter expert will present their method during a live demonstration.



Application use case

Provide a brief overview about how the data product can be used for real -word applications and research.

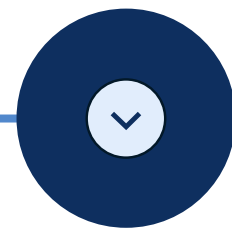
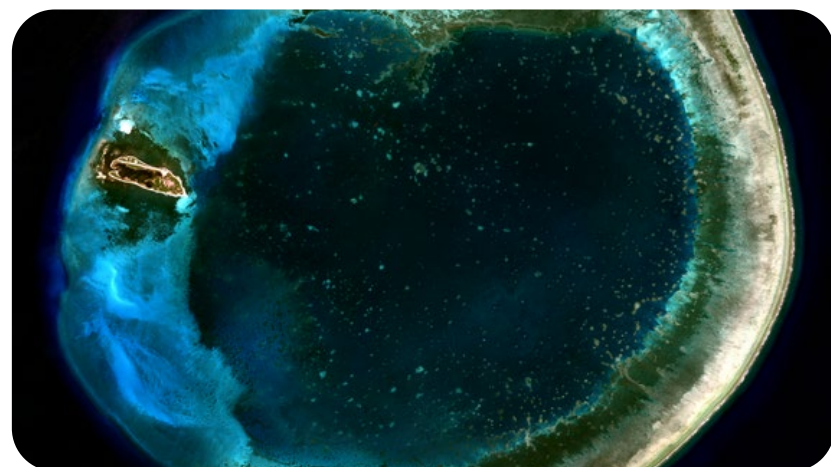


Thematic applications

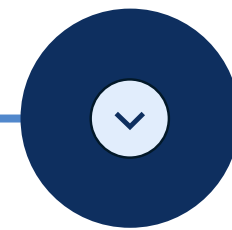
ICESat-2 can provide information about various biomes on the Earth beyond ice. In this series of webinars we propose to cover a diverse group of thematic applications. Note: topics are subject to change based on speaker availability. Future webinars will be announced two-weeks ahead of time.



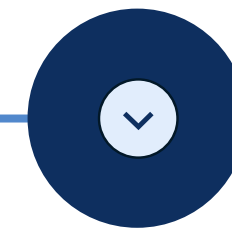
Bathymetry



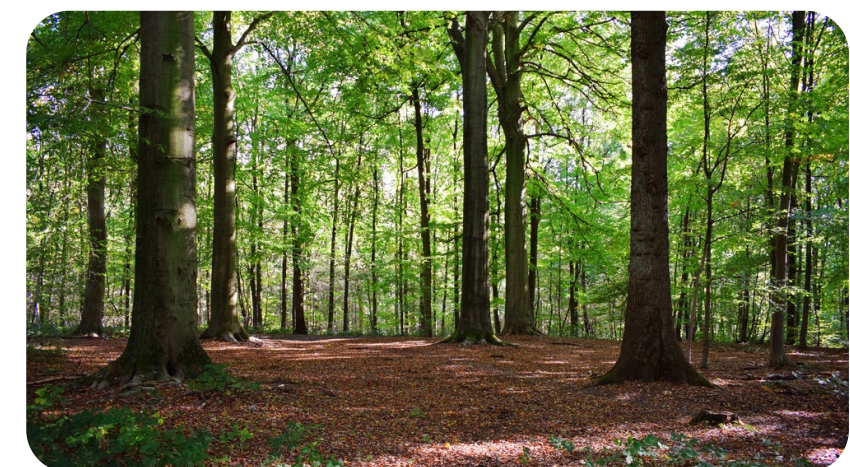
Sea ice and melt ponds

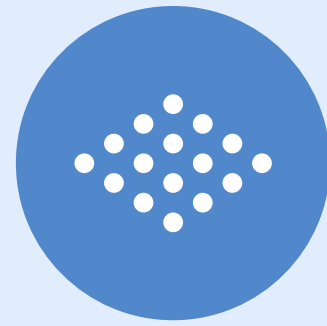


Hydrology

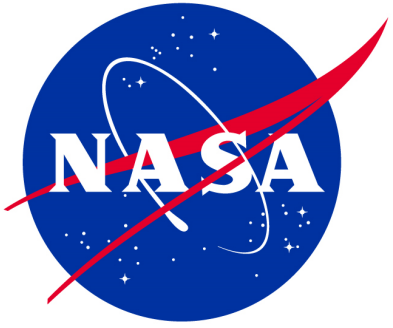


Forest vegetation and carbon biomass





National Aeronautics and
Space Administration



THANK YOU!



<https://lp.constantcontactpages.com/s1/2S3PYmO>



icesat -2-applications -JOIN@lists.nasa.gov