



EXPLORE EARTH

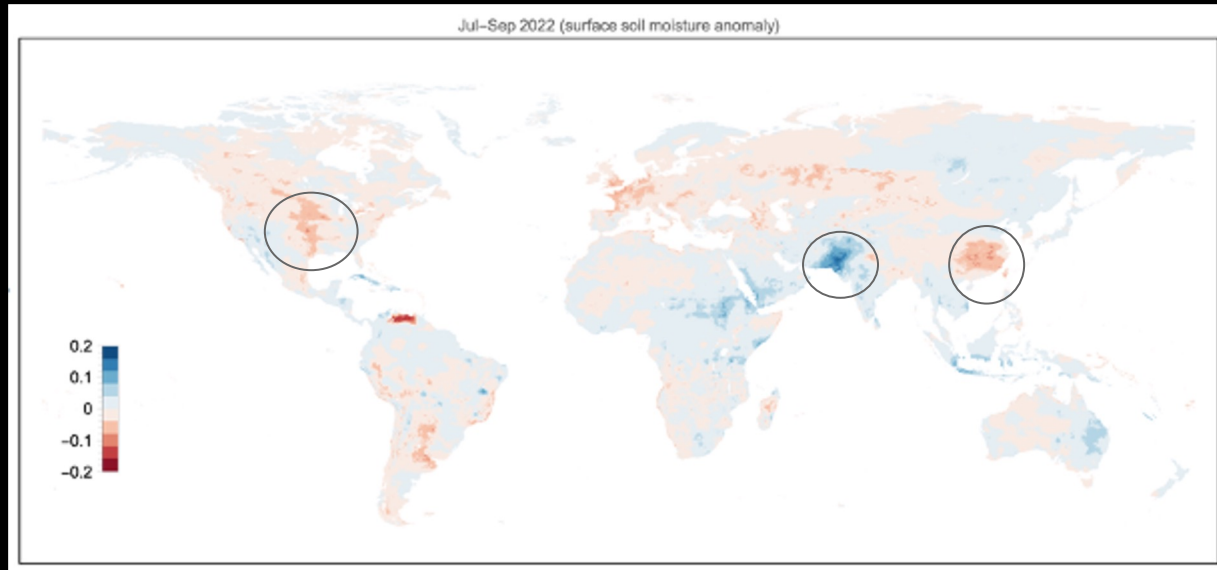
YOUR HOME, OUR MISSION

Earth Information System (EIS)

Monthly Highlights

May 2023

EIS synthesis captures major hydrological extremes of 2022



EIS global multivariate synthesis captures hydrological extremes, including the droughts over the Yangtze and Mississippi, as well as Pakistan floods.

Results from the EIS synthesis were provided to WMO as part of the 2022 State of the Water Cycle report.

July-Sep 2022 averaged soil moisture anomalies from the EIS global reanalysis, which includes the integration of information from GPM, GRACE-FO, MODIS, and SMAP missions/instruments

2023 CONUS Wildfires

Near-real Time Large Fire Data Access

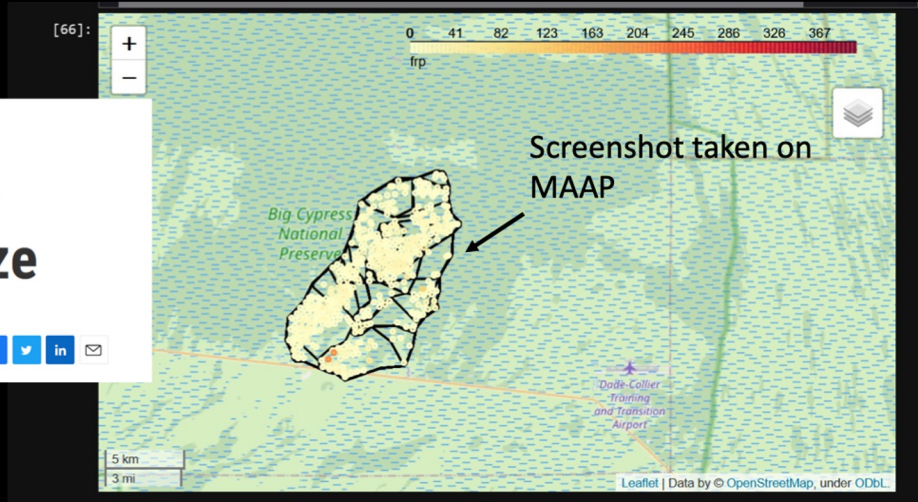
Environment

Fire crews providing structure protection on Big Cypress blaze

WGPU | By [WGPU Staff](#)
Published May 3, 2023 at 9:59 PM EDT

[f](#) [t](#) [in](#) [✉](#)

Florida Wildfire tracked via FEDS and delivered via API!



[Instructions](#) for direct public access via VEDA API.

Updates every 4-6hrs

<https://nasa-impact.github.io/veda-docs/example-notebooks/wfs.html>

Get Fire Perimeters from an OGC API

Explore data available through an OGC API, and how to filter data temporally, spatially, and by property.

AUTHOR	PUBLISHED
Tempest McCabe, Julia Signell	May 23, 2023

Next Steps: Stakeholder Engagement (FEMA, USFS, EIC, and FIRMS)

EIS Engagements in May

Organization/ Meeting	Thematic Area	Outcome
NASA Joint Science Workshop	Fire	Postdoc Posters on Fire Behavior (McCabe) & Fire Tracking (Coffield)
Wildland Fire Applied Science	Fire	Post-fire severity analysis & new collaborations across projects
USFS Wildfire Risk Management	Fire	Engagement on EIS Large Fire API, Post-fire products, and risk evaluation for residual heat within fire perimeter
NASA Greenhouse Gas Emissions Information Dissemination Meeting:	GHG	Discussed US Urban Greenhouse Gas Emissions Information Needs, Highlighted EIS capabilities
Salvador Municipality, Brazil	Coastal floods	Engagement with municipality officials on how to benefit from NASA data and tools to monitor current and future coastal flood risks in Salvador